

UC San Diego

SCHOOL OF GLOBAL POLICY AND STRATEGY

BA/MPP Information Session

October 13, 2022

SCHOOL OF GLOBAL POLICY AND STRATEGY (GPS)

DEPARTMENT OF ECONOMICS

UC SAN DIEGO

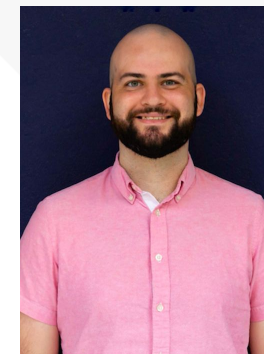
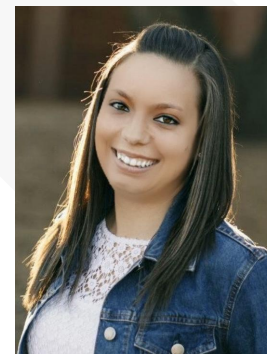
Introductions

Director of Degree Programs:
Dr. Nancy Gilson, School of Global Policy & Strategy and ISP

GPS Five-Year Programs Advisor:
Julia Ng



Economics Advisors:
Genna Pace, Kenny Jones, Ann Wu



What is the BA/MPP Program?

- Combined degree program offered by the Department of Economics & School of Global Policy and Strategy (GPS)
 - Builds on the Economics core sequences of the BA degree
 - Integrates the policy expertise and professional training of MPP degree
- Designed for students seeking advanced training in both the design and evaluation methodology of public policy around the globe, including in the US, and developing a deep expertise in a chosen policy specialty
- The BA/MPP Program is only open to the Economics (EN25) major
- Degrees Offered
 - **Bachelor of Arts in Economics-Public Policy (BA)- at the conclusion of your senior year**
 - **Master of Public Policy (MPP)- at the conclusion of the one additional year of graduate study**

Joint BA/MPP Degree Program

Five-year
for **freshman entry**

Three-year
for **transfer students**

BA/MPP Program Overview

Lower Division Requirements

- Mathematics Requirement
- Economics Courses

Upper Division Requirements

- Microeconomics Series
- Macroeconomics Series
- Econometrics Series
- Two Advanced Electives in Economics
- Specialized GPS MPP Core for Economics Majors

GPS MPP Requirements for the Second Year (48 Units)

- Policy Area of Specialization Courses
- Public Policy Capstone
- Associated Prerequisites and/or Electives

Lower Division Requirements

Mathematics Requirements

- MATH 10A-B-C. or
- MATH 20A-B-C.

Economics Courses

- ECON 1. Principles of Microeconomics
- ECON 3. Principles of Macroeconomics

Upper Division Requirements

Microeconomics Series

ECON 100A-B-C

Macroeconomics Series

ECON 110A-B

Econometrics Series

ECON 120A-B-C

Economics Advanced Electives

2 Advanced Economics Electives from the approved, department list

GPS MPP Requirements

MPP Core

MPP Core Coursework for the Senior Year

Fall

- GPCO 408. Policy Analysis and Public Welfare

Winter

- GPCO 400. Policy Making Processes
- GPCO 404. Market Failures and Policy Interventions

Spring

- GPCO 406. Public Finance and Taxation
- GPCO 407. Policy Analysis and Decision Theory

GPS MPP Requirements

Area of Specialization

Areas of Specialization- must have at least one

- American and Comparative Business Regulation
- Environmental Policy
- Health Policy
- Inequality and Social Policy
- Peace and Security
- Program Design and Evaluation

Area of Specialization

Area of Specialization Requirement

- Required to Complete at Least ONE
- Complete 5 Unique Courses
 - 2 Required Courses
 - ONE you must take
 - TWO from which you choose ONE
 - Ex: PD&E, you must take GPEC 446 QMIII, but then choose from either GPPS 456. Evaluating Social Programs or GPEC 443. GIS
 - 3 Elective courses from prescribed list
- It is possible to complete more than one Area of Specialization

Optional Foreign Language Credit

Language Courses – Must Petition

The MPP does not have a language requirement, but...

- Only 12 units of language will count towards **graduate** degree
- Language must match coursework on a country focus in the Asia Pacific Region
 - Must have at least TWO matching regional courses for petition approval
 - Example: If you take Japanese, you must have coursework focused on Japan, such as “Postwar Politics in Japan”
- Language classes must be taken for a LETTER grade
 - Web Reg default for language classes is “S/U”
- Must secure permission by petition by the fall of your second year. Be prepared to identify the courses you will take.

GPS MPP Requirements

Foreign Language (Optional)

Language Courses

- Spanish -- undergraduate department, GPS – Year 2
- Chinese (Mandarin) -- undergraduate department
- Japanese -- undergraduate department, GPS – Year 4
- Korean -- undergraduate department only
- Portuguese -- undergraduate department only
- Heritage Courses (Hindi, Tagalog, Thai, Vietnamese) --undergraduate department only

BA/MPP Program Overview

Freshman (5 Year Plan)

| | Fall | Winter | Spring |
|---------------|--|--|--|
| Freshman | MATH 10/20A ECON 1 | MATH 10/20B ECON 3 | MATH 10/20C |
| Sophomore | ECON 100A ECON 120A | ECON 100B ECON 120B | ECON 100C ECON 120C |
| Junior | ECON 110A UD ECON Adv. Elective | ECON 110B | UD ECON Adv. Elective |
| Senior | GPCO 408 | GPCO 400 GPCO 404 | GPCO 406 GPCO 407 GPEC 446 (rec) |
| Graduate Year | GPEC 443 (rec) Area of Specialization Area of Specialization Area of Specialization | MPP Capstone GPEC 444 (rec) Area of Specialization Area of Specialization | Area of Specialization Area of Specialization Area of Specialization Elective |

BA/MPP Program Overview

Transfer (3 Year Plan)

assumes ECON 1,3 and MATH 10/20A, 10/20B, 10/20C are complete

| | Fall | Winter | Spring |
|---------------|--|--|--|
| Junior | ECON 100A ECON 120A | ECON 100B ECON 120B ECON 110A | ECON 100C ECON 120C ECON 110B |
| Senior | GPCO 408 UD Adv. Elective | GPCO 400 GPCO 404 UD Adv. Elective | GPCO 406 GPCO 407 GPEC 446 (rec) |
| Graduate Year | GPEC 443 (rec) Area of Specialization Area of Specialization Area of Specialization | MPP Capstone GPEC 444 (rec) Area of Specialization Area of Specialization | Area of Specialization Area of Specialization Area of Specialization Elective |

GPS MPP Optional Requirements **Certificate Programs**

Certificate Programs

- 3 Courses Minimum
- 1-2 required courses plus 1-2 elective courses
- Can overlap with GPS degree requirements
 - **Quantitative Certificate**
 - **Spatial Analysis Certificate**
 - **Energy Analytics**

BA/MPP Application Information

- Application Deadline: **April of each year**
- Application
 - UCSD online application system – SLATE (<https://connect.grad.ucsd.edu/apply/>)
 - Public Policy (GP76)
 - If you are applying in Spring 2023, the application will open by January 1st
 - You will apply for Fall 2024, the beginning of your actual graduate year
- Essays
 - **Required:** Statement of purpose: professional objectives in public policy and/or research interests, how your background has prepared you to pursue these objectives, how the GPS program will help you achieve these objectives
 - **Optional:** Supplemental essay that allows you to tell us something we should know about you or your background
- Resume
- Transcripts
- Names and email addresses of two faculty recommenders

Admissions Requirements

- Advising appointment and confirmed eligibility:
Dr. Nancy Gilson ngilson@ucsd.edu OR Julia Ng jtng@ucsd.edu
- **Completion of the following by the end of spring quarter of junior year:**
 - Math 10A-B-C or Math 20A-B-C
 - ECON 1, 3
 - ECON 100A-B-C
 - ECON 110A-B
 - ECON 120A-B-C
 - Substantial progress in GE requirements
- **Major GPA:** 3.4 or above
- **Cumulative GPA:** 3.0 or above

Financial Aid

- Undergraduate Financial Aid applies to the first year of the program while still in undergraduate standing (senior year)
- For graduate year, students apply for graduate financial aid using many of the same forms
- Students who perform well in their first year GPS Core courses, are often invited to TA in their graduate year, which pays for tuition and fees.
- Beginning this year, there is also limited fellowship money available for the graduate year of the program.

Career Outcomes at GPS

GPS prepares students for careers in the public, private, nonprofit, and multilateral sectors throughout the world. We have alumni working in over 100 countries in jobs such as:

- Supply chain manager at global technology companies
- Foreign Service Officers
- Policy analysts in international multilateral organizations
- Research assistants at global think tanks
- Policy analysts in environmental policy
- Intelligence analyst
- Human rights advocate
- Nonprofit consultant
- Development NGOs

GPS Career Support

- BA/MPP Students are required to complete a professional internship after their senior year
- Career Development Program
- Sector-focused Career Coaching and Workshops
- Resume review and mock interviews
- Alumni Career Talks and Quarter Connections
- Outreach events in San Diego, LA, San Francisco, Sacramento, New York, and DC (as allowed by travel restrictions)
- Internship and Professional Development Funding

GPS Happenings



- **@gps_ucsd:** to see GPS events, faculty research, etc.
- **@gpscareerservices:** to see programs, workshops, and opportunities available with GPS Career Services

facebook

- **School of Global Policy and Strategy**

LinkedIn

- **UC San Diego School of Global Policy and Strategy (GPS)**

Contact Us!

To Schedule an Appointment:

School of Global Policy & Strategy

Email Dr. Nancy Gilson at ngilson@ucsd.edu or
Julia Ng at jtng@ucsd.edu

Review Requirements:

<https://gps.ucsd.edu/academics/ba-mpp.html>

Contact the Economics Undergraduate Advising Office through the Virtual Advising Center

<http://vac.ucsd.edu>